


SPECIFICATION

- a) Flange :-
Steel to BS EN 10025:1993
Grade S235 or equivalent
- b) End Flange & Flange Sleeve :-
Rolled Steel to BS EN 10025:1993
Grade S275 or equivalent
- c) Finishing :-
Fusion Bonded Epoxy Powder Coated
Coated Approx. 300 microns thick (Black)
- d) Studs, Nuts & Washers :-
Stainless Steel SS 316
- e) Tie Bars & Nuts :-
Stainless Steel SS 316
- f) Sealing Ring :-
NBR To BS EN 681-1 Type 'WA'
- g) Flange Drilling :-
AS 4087 Class 16
- h) Working Pressure :-
16 Bar

DN	Nominal Length	Minimum Length	Maximum Length	ØD	K	T	Flange Drilling		Flange Adaptor Studs No - Dia x Lgth	Number of Tie Bars	Dia x Length of Tie Bars	VOLUME (M3)	WEIGHT (KG)
							No of Holes	Holes Dia					
80	195	170	220	185	146	15	4	18	4 - 1/2" x 4 1/2"	4	M16 x 310	0.011	11.7
100	195	170	220	215	178	15	4	18	4 - 1/2" x 4 1/2"	4	M16 x 310	0.014	13.9
150	195	170	220	280	235	15	8	18	4 - 1/2" x 4 1/2"	4	M16 x 320	0.025	19.2
200	225	200	250	335	292	20	8	18	4 - 1/2" x 4 1/2"	4	M16 x 340	0.038	28.9
225	225	200	250	370	324	20	8	18	4 - 1/2" x 4 1/2"	4	M16 x 340	0.047	36.0
250	225	200	250	405	356	20	8	22	8 - 1/2" x 5 1/4"	4	M20 x 370	0.061	45.5
300	225	200	250	455	406	23	12	22	6 - 1/2" x 5 1/4"	4	M20 x 370	0.077	54.5
350	235	210	260	525	470	25	12	26	6 - 1/2" x 6"	4	M24 x 410	0.113	74.3
375	235	210	260	550	495	25	12	26	6 - 1/2" x 6"	4	M24 x 410	0.124	78.7
400	275	250	300	580	521	25	12	26	6 - 1/2" x 6"	6	M24 x 460	0.155	92.1
450	275	250	300	640	584	25	12	26	6 - 1/2" x 6"	6	M24 x 460	0.188	104.5
500	275	250	300	705	641	25	16	26	8 - 1/2" x 6"	8	M24 x 460	0.229	122.9
600	295	270	320	825	756	25	16	30	8 - 1/2" x 6"	8	M27 x 480	0.327	157.9
700	295	270	320	910	845	25	20	30	10 - 5/8" x 6"	10	M27 x 510	0.422	179.2
750	295	270	320	995	927	25	20	33	10 - 5/8" x 6"	10	M30 x 510	0.505	227.1
800	315	290	340	1060	984	25	20	36	10 - 5/8" x 6"	10	M33 x 540	0.607	248.8
900	315	290	340	1175	1092	25	24	36	12 - 5/8" x 6 1/2"	12	M33 x 560	0.773	302.1

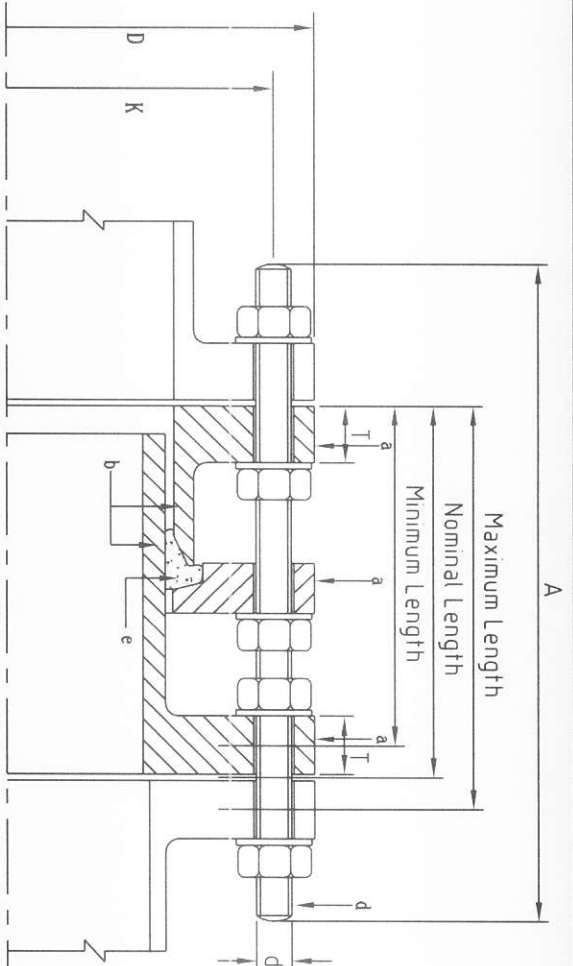


PIPEMATE SDN BHD
MALAYSIA
TEL : 603-61380977
email : pipemate@tm.net.my
pipemate@streamyx.com

CLIENT :
PROJECT :

TITLE : 'PM' RESTRAINED DISMANTLING JOINT

DRAWN BY : YC SEE	CHECKED BY : KH LEE	APPROVED BY : KH LEE
DRG NO : PM/PROJ/2906/12	REV : 1	DATE : 20/07/13
		SCALE : NTS



DN	MAXIMUM LENGTH	NOMINAL LENGTH	MINIMUM LENGTH	D	K	T	BOLTS	HOLE DIA	STUDS		VOLUME (M3)	WEIGHT (KG)
									NO	SIZE d LGTH A		
80	220	195	170	185	146	15	18	4	M16	310	0.011	12.4
100	220	195	170	215	178	15	18	4	M16	310	0.014	14.9
150	220	195	170	280	235	15	18	8	M16	320	0.025	24.1
200	250	225	200	335	292	20	18	8	M16	340	0.038	35.6
225	250	225	200	370	324	20	18	8	M16	340	0.047	43.8
250	250	225	200	405	366	20	22	8	M20	370	0.061	55.1
300	250	225	200	455	406	23	22	12	M20	370	0.077	71.2
350	260	235	210	525	470	25	26	12	M24	410	0.113	102.2
375	260	235	210	550	495	25	26	12	M24	410	0.124	107.5
400	300	275	250	580	521	25	26	12	M24	460	0.155	119.2
450	300	275	250	640	584	25	26	12	M24	460	0.188	134.6
500	300	275	250	705	641	25	26	16	M24	460	0.229	161.6
600	320	295	270	825	756	25	30	16	M27	480	0.327	210.7
700	320	295	270	910	845	25	30	20	M27	510	0.422	233.0
750	320	295	270	995	927	25	33	20	M30	510	0.505	308.9
800	340	315	290	1060	984	25	36	20	M33	540	0.607	342.1
900	340	315	290	1175	1092	25	36	24	M33	560	0.773	414.9

SPECIFICATION

- a) Flange & End Flange : -
Steel to BS EN 10025:1993
Grade S235 or equivalent
- b) Flange Sleeve: -
Rolled Steel to BS EN 10025:1993
Grade S275 or equivalent
- c) Finishing : -
Fusion Bonded Epoxy Powder Coated
Coated Approx. 300 microns thick
- d) Tie Bars, Nuts & Washer : -
Stainless Steel SS 316
- e) Sealing Ring : -
NBR To BS EN 681-1 Type 'WA'
- f) Flange Drilling : -
AS 4087 CLASS 16
- g) Working Pressure : -
16 bar



PIPIMATE SDN BHD
MALAYSIA
TEL : 603-61380977 FAX : 603-61388772
email : pipemate@tm.net.my
pipemate@streamyx.com

CLIENT :
PROJECT :

TITLE : 'PM' FLANGE RESTRAINED DISMANTLING JOINT

DRAWN BY : YC SEE	CHECKED BY : KH LEE	APPROVED BY : KH LEE
DRG NO : PM/FRD/1202/12	REV : 1	DATE : 20/07/13
		SCALE : NMS