



3 IN 1 STRAINER PN10/PN16

(WITH EXPANSION JOINTS AND FLOW CONDITIONER)



APPLICATION

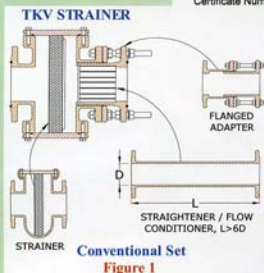
- To be installed before water meters, in order to:
- Prevent damage on water meters by filtering the water entering water meter.
 - Increase water flow rate measuring accuracy of water meters.

Patent Application Number :
PI 20055860

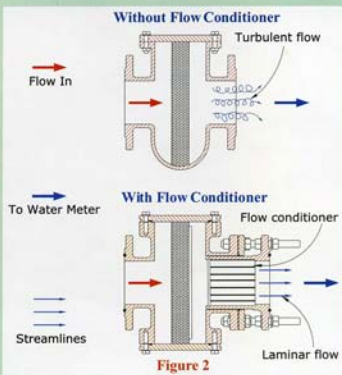


MAIN FEATURES & BENEFITS

- As shown in Figure 1, TKV strainer have 2 additional functions (flow conditioner and expansion joints), thus TKV strainer reduce the total cost, space required, and make it easy for maintenance and assembling work.
- Stainless steel screen block any impurities (stone, and etc) in the water that larger than 1.5mm in diameter, thus prevent damage on the internal components of water meters.

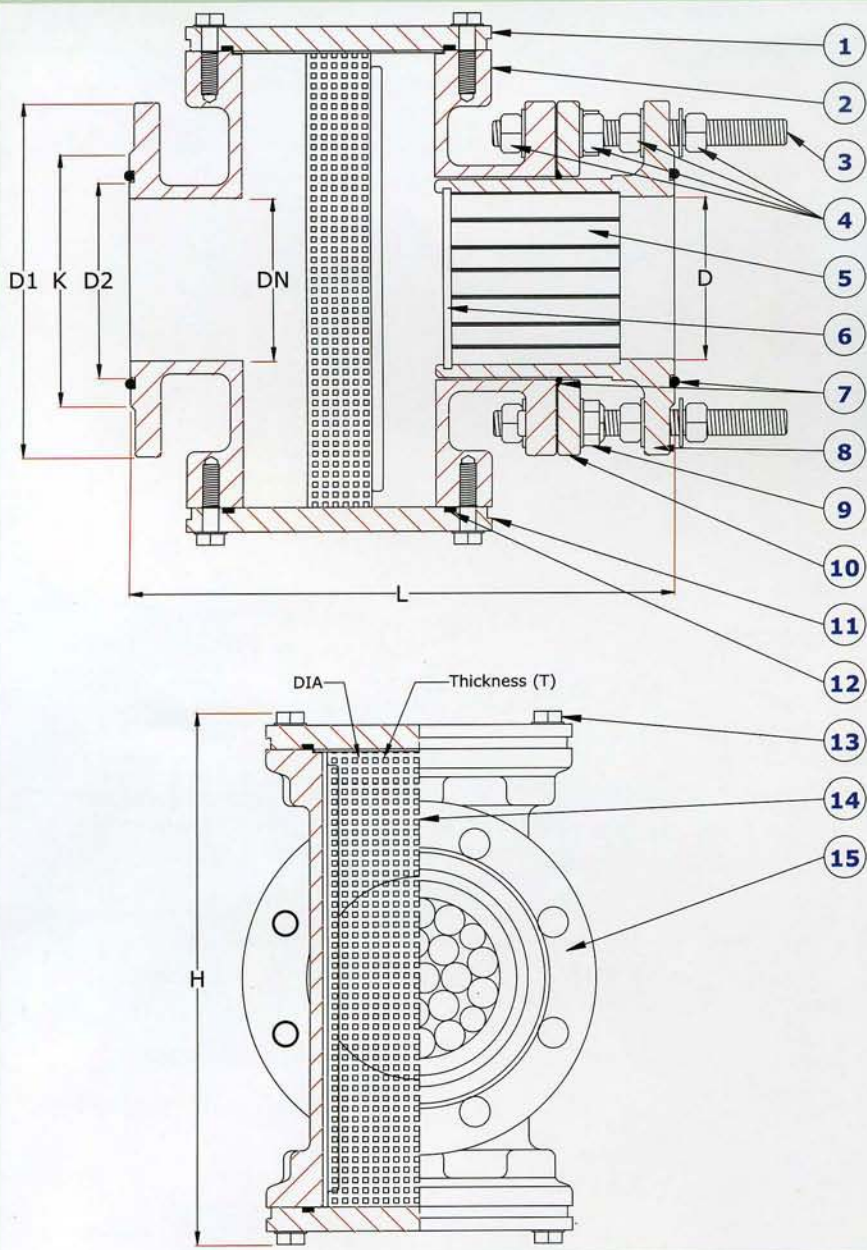


- Stainless steel flow conditioner pipe set, able to reduce turbulent flow and creating laminar flow, thus increasing flow rates measuring accuracy of water meters. See Figure 2
- Built-in expansion joints allow flexible movements of the distances between flow meter, thus easy for assembling work.
- Fusion Bonded Epoxy Powder (FBE) coating body, able to withstand mostly all harsh conditions, thus increase the life span of strainer.

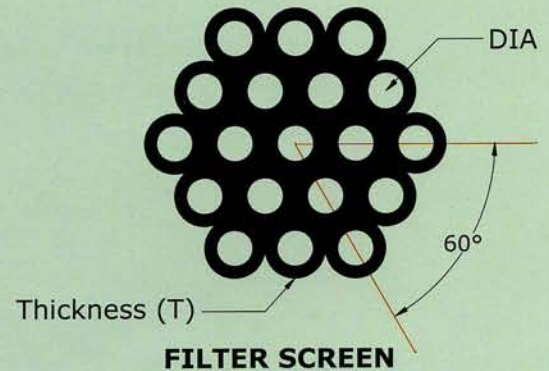


TKV 3 IN 1 STRAINER

DN50 to DN200 & DN600, PN10 & PN16, (FBE) COATED



NO	Component	Material
1	Upper Cap	Ductile Iron, BS EN1563 Grade 500/7
2	Strainer Body	Ductile Iron, BS EN1563 Grade 500/7
3	Expansion Joint Stud	Zinc Coated Steel/S.S., BS 970:Part 1 304
4	Nuts & Washers	Zinc Coated Steel/S.S., BS 970:Part 1 304
5	Flow Conditioner Tube	Stainless Steel, BS 970:Part 1 304
6	Circlip	Stainless Steel, BS 970:Part 1 304
7	O-Ring Seal	EPDM, BS EN 681-1 Type WA
8	Expansion Pipe	Ductile Iron, BS EN1563 Grade 500/7
9	Hex. Head Bolts & Washers	Zinc Coated Steel/S.S., BS 970:Part 1 304
10	Press Ring	Ductile Iron, BS EN1563 Grade 500/7
11	Lower Cap	Ductile Iron, BS EN1563 Grade 500/7
12	O-Ring Seal	EPDM, BS EN 681-1 Type WA
13	Hex. Head Bolts & Washers	Stainless Steel, BS 970:Part 1 304
14	Filter Screen	Stainless Steel, BS 970:Part 1 304
15	Coating	Fusion Bonded Epoxy Powder Coated



FEATURE	SPECIFICATION
Works Test Pressure	Maximum=40 Bar
Flange Drillings	BS EN 1092-2:1997/ISO 7005 PN16 other drillings available
Maximum Service Temperature	70° C

Dimensions in millimetres (mm)

DN	D	H	Min.L	Max.L	Screen		Weight KG
					DIA	T	
50	50	240	285	325	1.5	1.0	20
80	80	320	310	360	3.0	1.0	33
100	100	330	350	410	3.0	1.0	38
150	150	430	450	540	5.0	1.2	68
200	200	520	550	650	5.0	1.2	105
600	600	1050	1300	1600	6.0	3.0	1100

Agent / Distributed By:



PIPEMATE SDN. BHD. (106977-A)
No. 28, (Lot 17512), Jalan Dua,
Kawasan Perindustrian Selayang,
Taman Selayang Baru, 68100 Selangor, Malaysia.
Tel: 603-61380977, 61387211 & 61388667
Fax: 603-61388772 e-mail: pipemate@tm.net.my



PIPEMATE SDN BHD

MALAYSIA
 TEL : 603-61380977
 FAX : 603-61388772

CLIENT :

PROJECT :

TITLE : METERING STATION WITH TKV STRAINER C/W FLOW CONDITIONER

DR BY : Y. C. SEE

CK BY : K. H. LEE

SCALE : M/S

DRG NO : PM/3412/04

REV :

DATE : 26/03/04

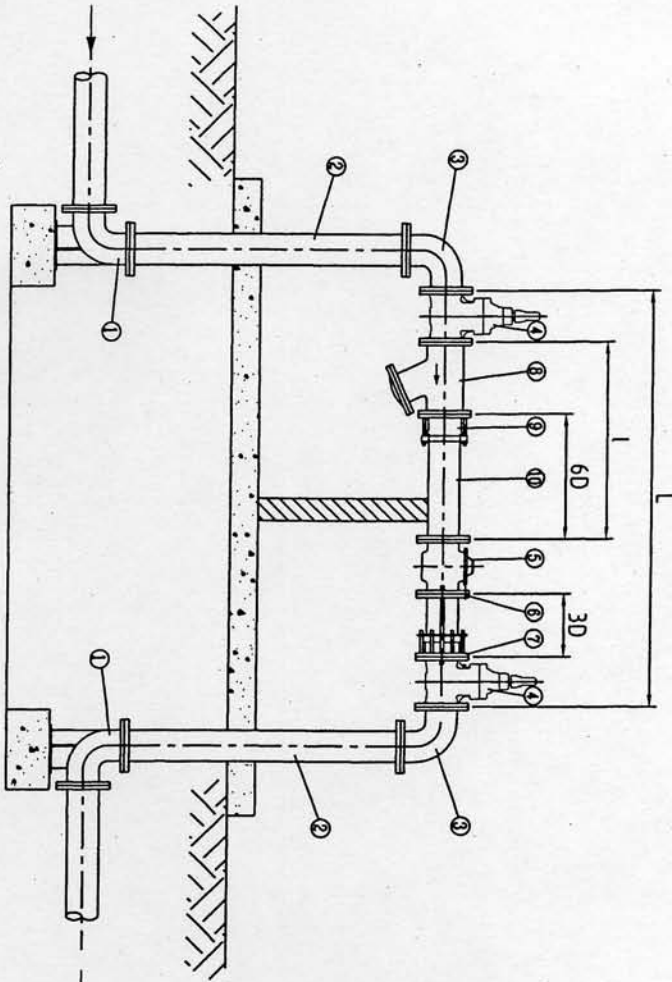
1. D.I Duckfoot Bend D/F/F (FBBE coated)
2. M.S. Pipe D/F/F(FBBE coated)
3. D.I. Bend D/F/F (FBBE coated)
4. "TKV" Sluice Valve c/w cap top D/F/F
5. Water Meter D/F/F
6. M.S. Pipe S/F/F(FBBE coated)
7. Flange Adaptor c/w tie bolts
8. D.I. Y-Strainer or T-Pot Strainer
9. "PW" Ultrafil Flange Adaptor
10. M.S. Pipe S/F/F(FBBE coated)

Meter Size D	Normal Strainer		TKV Strainer	
	L	I	L	I
80	1776	780	1296	300
100	2048	940	1448	340
150	2804	1320	1904	420
200	3394	1680	2194	480

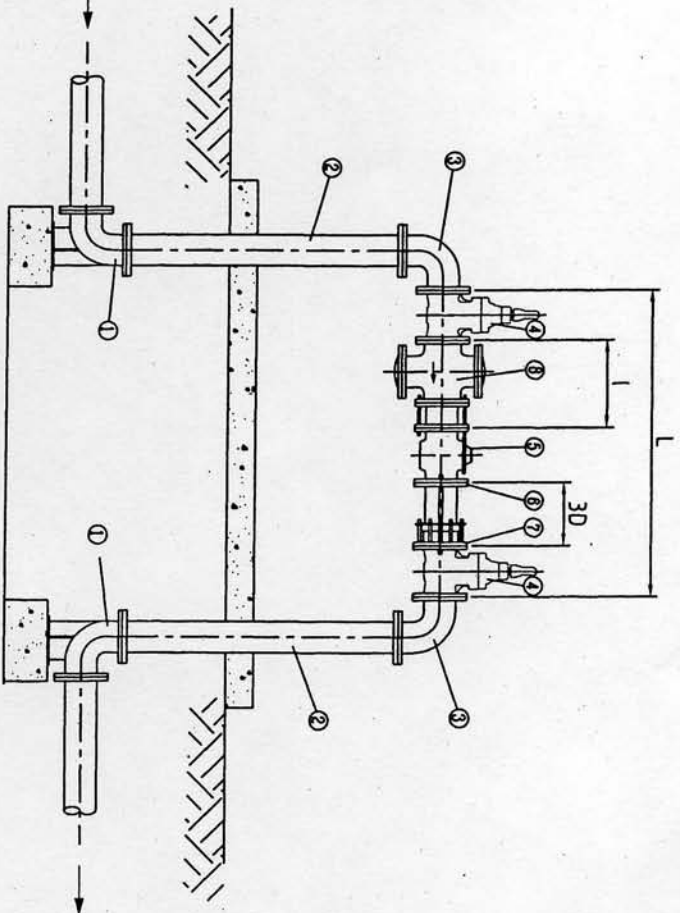
1. D.I. Duckfoot Bend D/F/F (FBBE coated)
2. M.S. Pipe D/F/F(FBBE coated)
3. D.I. Bend D/F/F (FBBE coated)
4. "TKV" Sluice Valve c/w cap top D/F/F
5. Water Meter D/F/F
6. M.S. Pipe S/F/F(FBBE coated)
7. Flange Adaptor c/w tie bolts
8. TKV Strainer

DESCRIPTION

Metering Station with Normal Strainer



Metering Station with TKV Strainer



DESCRIPTION